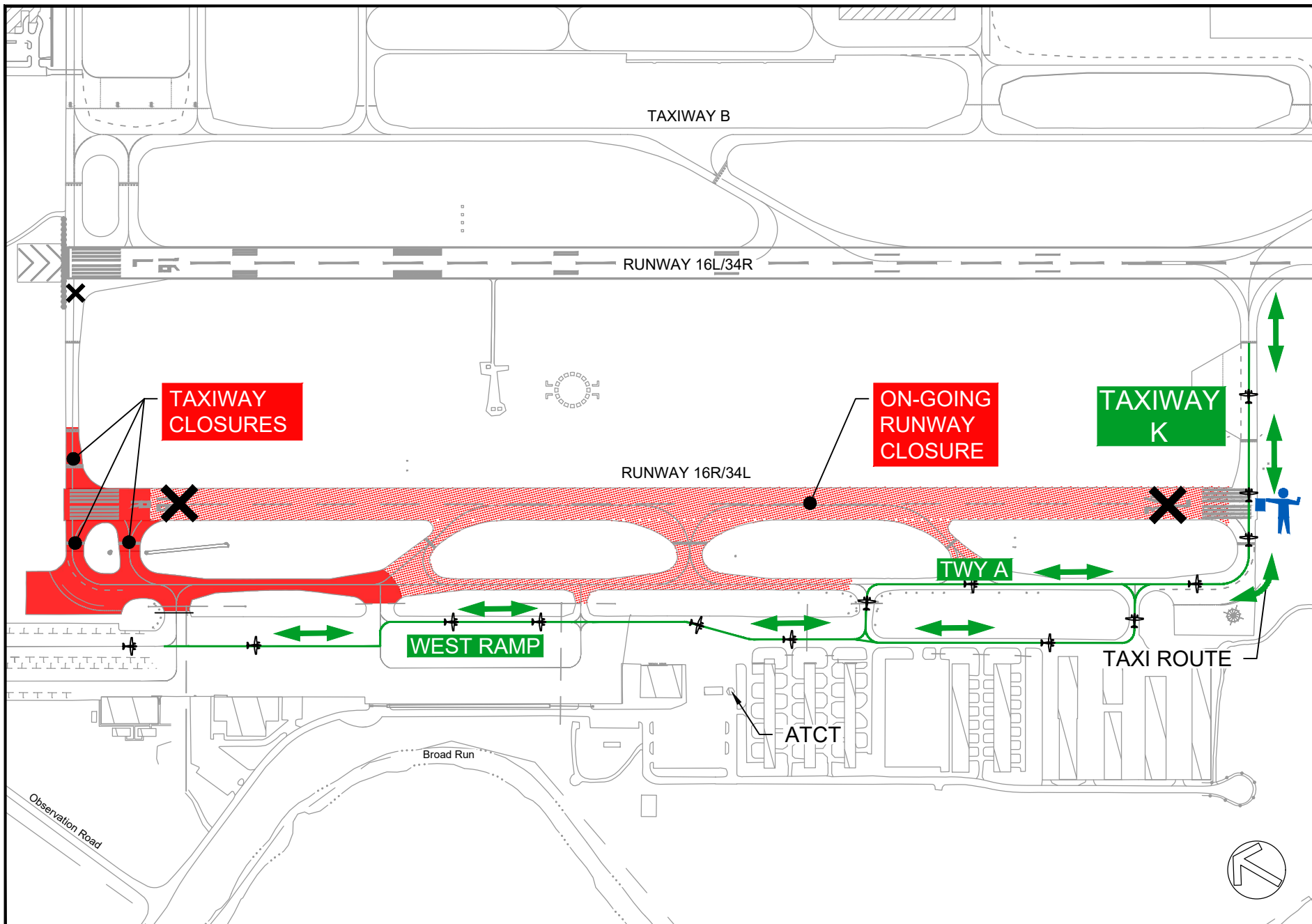


RS&H
 RS&H, Inc.
 2800 Park Tower Dr
 Suite 101
 Vienna, VA 22180
 703-549-2472

Runway Construction Closure #1 - Work Area 'A' 45 Calendar Days

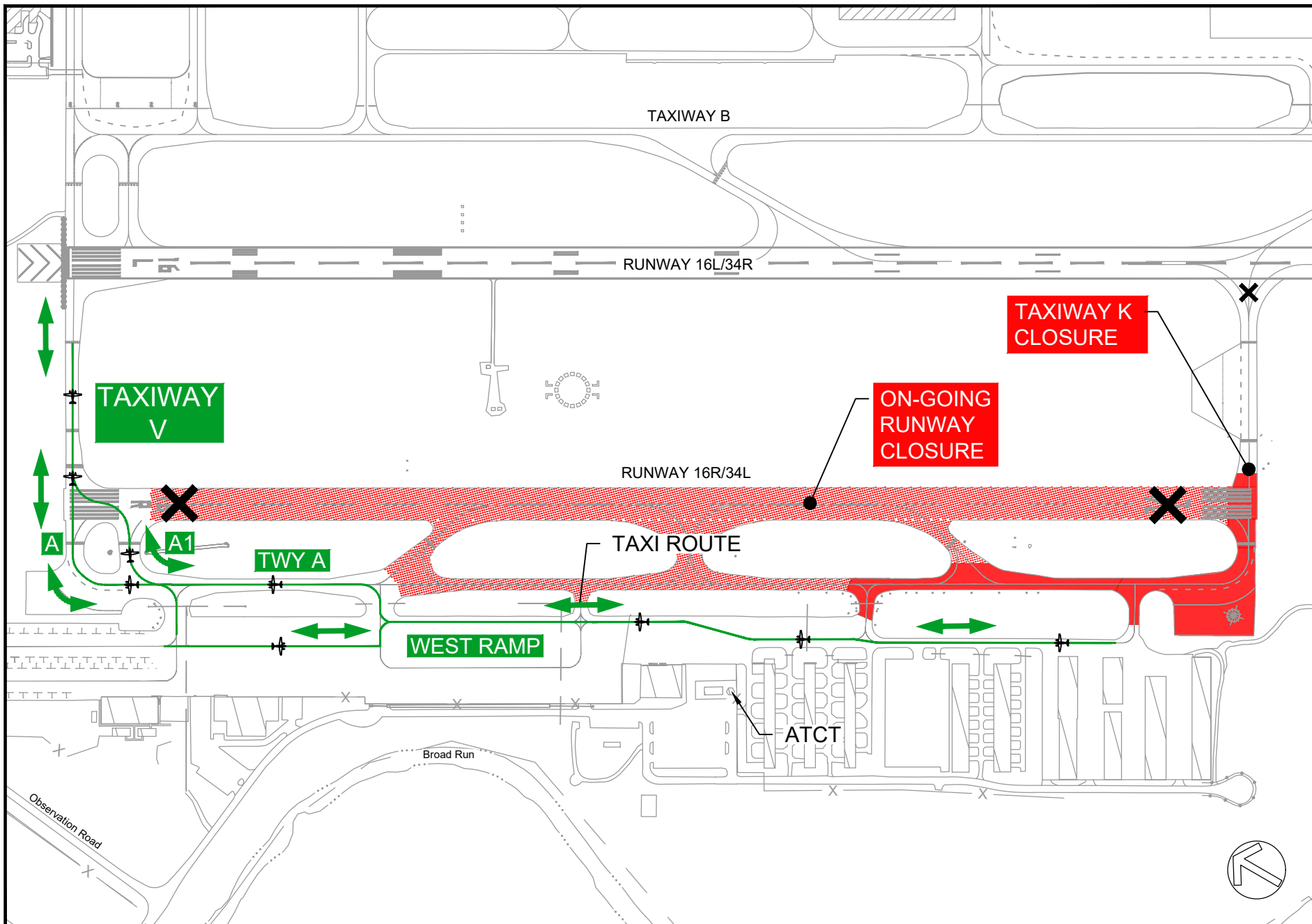
ACCESS TO EAST SIDE OF AIRFIELD VIA TAXIWAYS 'V' AND 'K'



RS&H
 RS&H, Inc.
 2800 Park Tower Dr
 Suite 101
 Vienna, VA 22180
 703-549-2472

Runway Construction Closure #1 - Work Area 'B' 10 Calendar Days

ACCESS TO EAST SIDE OF AIRFIELD VIA TAXIWAY 'K'



Runway Construction Closure #1 - Work Area 'C' 6 Calendar Days

ACCESS TO EAST SIDE OF AIRFIELD VIA TAXIWAYS 'A', 'A1' & 'V'



RS&H
RS&H, Inc.
2800 Park Tower Dr
Suite 101
Vienna, VA 22180
703-549-2472