

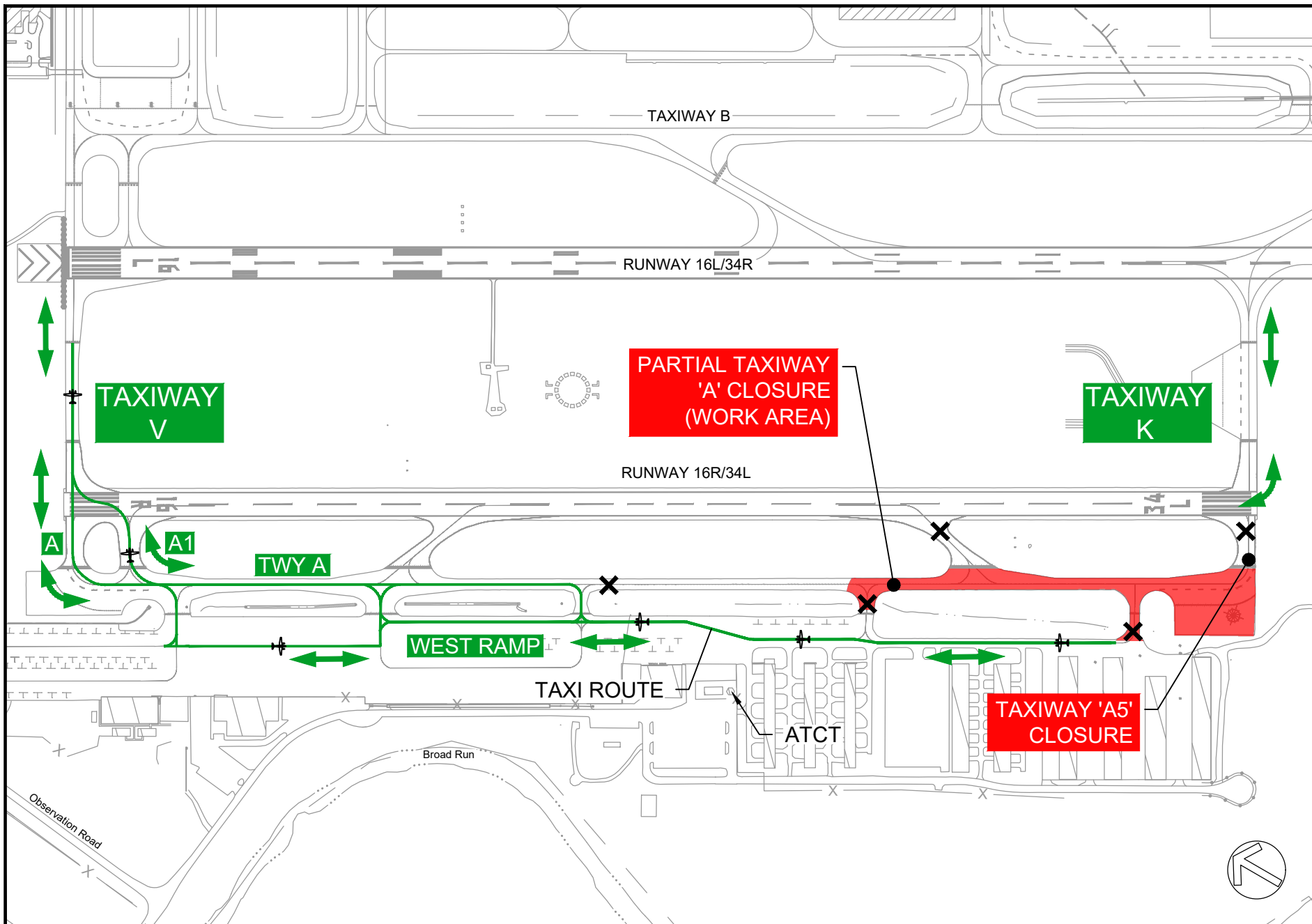
Taxiway A - Construction Closure #4A

**Closed: October 30, 2023 - Through
October 31, 2023 - 5 P.M.**

ACCESS TO EAST SIDE OF AIRFIELD VIA TAXIWAYS 'A' & 'K'



RS&H
RS&H, Inc.
2800 Park Tower Dr
Suite 101
Vienna, VA 22180
703-549-2472



Taxiway A - Construction Closure #4B

Closed: October 31, 2023 - 5 P.M. Through
November 1, 2023

ACCESS TO EAST SIDE OF AIRFIELD VIA TAXIWAYS 'A', 'A1' & 'V'



RS&H
RS&H, Inc.
2800 Park Tower Dr
Suite 101
Vienna, VA 22180
703-549-2472